

Complete Your Architecture

Application Technique

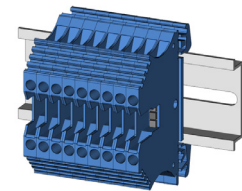
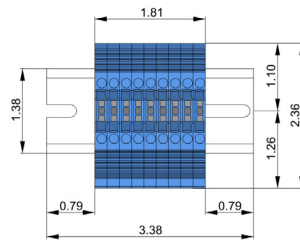
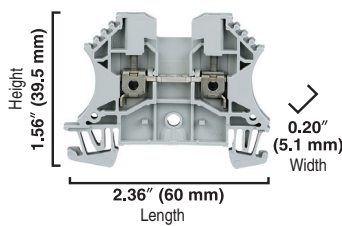


Running Out of Panel Space?

Use multi-circuit terminal blocks to optimize your panel

Customer Need

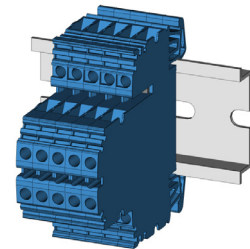
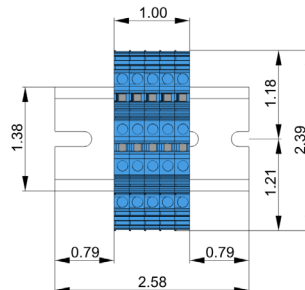
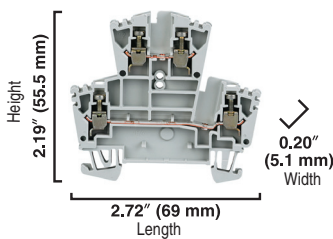
As the number of devices used on the plant floor increases, so does the number connections required to allow these devices to communicate. This creates a 1:1 correlation between the number of connections and the number of terminal blocks required to serve this need. Such a correlation can quickly fill up any available panel space, limiting system architecture expansion capabilities or requiring more time and money to be spent on panel upgrades and reconfigurations.



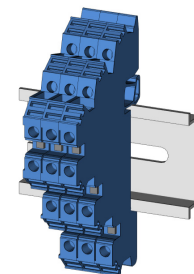
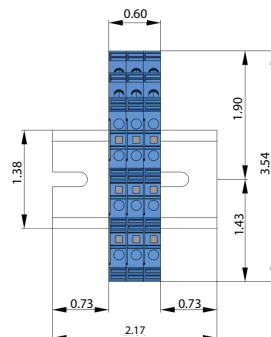
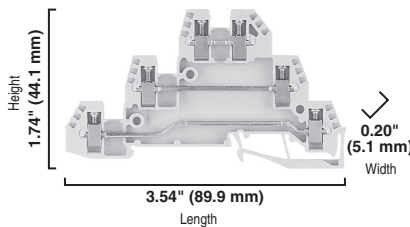
1492-J...

Component Solution

Allen-Bradley Bulletin 1492 Multi-Circuit Terminal Blocks create a space savings of up to 66% compared to traditional single-level terminal blocks. Their increased height accommodates more connections along the same DIN rail width, reducing the number of terminal blocks required and freeing up space on the DIN rail.



1492-JD...



1492-WTF...

LISTEN.
THINK.
SOLVE.

Summary

With a high demand for panel space-saving technology, the 1492 Multi-Circuit Terminal Blocks provide a solution to save panel space, helping you to optimize your current investment and position yourself for future expansions. Spring-clamp terminals are available for easy wiring and enhanced performance in high-vibration environments. Fuse block configurations are also an option for additional cost savings.

Product Selection

Description	Pkg. Qty.	Cat. No.
Standard Feed-Through (IEC Screw-Type)		
1492-J IEC Terminal Block, One-Circuit Feed-Through Block, 2.5 mm ² (# 24... # 12 AWG), Standard Feed-Through, Grey (Standard)	100	1492-J3
1492-J IEC Terminal Block, Two-Circuit Feed-Through Block, 2.5 mm ² (# 24... # 12 AWG), Standard Feed-Through, Grey (Standard)	100	1492-JD3
1492-W IEC Terminal Block, Three-Circuit Feed-Through Block, 2.5 mm ² (# 24... # 12 AWG), Standard Feed-Through, Grey (Standard)	50	1492-WTF3
Standard Feed-Through (IEC Spring Clamp)		
Spring Clamp Terminal Block, One-Circuit Feed-Through Block, 2.5 mm ² (# 30... # 12 AWG), Standard Feed-Through, Grey (Standard)	100	1492-L3
Spring Clamp Terminal Block, Two-Circuit Feed-Through Block, 2.5 mm ² (# 22 AWG - # 14 AWG), Standard Feed-Through, Grey (Standard)	25	1492-LD3
Spring Clamp Terminal Block, Three-Circuit Feed-Through Block with multiple cross connection points, 2.5 mm ² (# 22 AWG - # 14 AWG), Standard Feed-Through, Grey (Standard),	25	1492-LTF3
Fuse Block (IEC Screw-Type)		
1492-W IEC Terminal Block, One-Circuit Fuse Block (5 x 20 mm Fuses, Type W), 4 mm ² (# 22... # 10 AWG) or 2.5 mm ² (# 22... # 12 AWG), Non-Indicating, Black (Standard)	50	1492-WFB4
1492-J IEC Terminal Block, Two-Level Block, 2.5 mm ² (# 22... # 12 AWG), Hinged-arm fuse circuit, Grey (Standard), 500V/600V AC/DC	50	1492-JD3FB
1492-J IEC Terminal Block, Three-Level Feed-Through Block, 4 mm ² (# 22... # 12 AWG) or 2.5 mm ² (# 26... # 12 AWG), Hinged-arm fuse circuit, Grey (Standard), 500V/600V AC/DC	50	1492-JDG3FB

For more information on 1492 Multi-Circuit Terminal Blocks, visit: <http://ab.rockwellautomation.com/Terminal-Blocks/1492-J-Multi-Circuit-Feed-Through>.

Allen-Bradley, Rockwell Software, Rockwell Automation, and LISTEN. THINK. SOLVE are trademarks of Rockwell Automation, Inc.
Trademarks not belonging to Rockwell Automation are property of their respective companies.

www.rockwellautomation.com

Power, Control and Information Solutions Headquarters

Americas: Rockwell Automation, 1201 South Second Street, Milwaukee, WI 53204-2496 USA, Tel: (1) 414.382.2000, Fax: (1) 414.382.4444
Europe/Middle East/Africa: Rockwell Automation NV, Pegasus Park, De Kleetlaan 12a, 1831 Diegem, Belgium, Tel: (32) 2 663 0600, Fax: (32) 2 663 0640
Asia Pacific: Rockwell Automation, Level 14, Core F, Cyberport 3, 100 Cyberport Road, Hong Kong, Tel: (852) 2887 4788, Fax: (852) 2508 1846

Publication 1492-AT002C-EN-P - April 2016

Supersedes Publication 1492-AT002B-EN-P - April 2016

Copyright © 2016 Rockwell Automation, Inc. All rights reserved. Printed in the U.S.A.