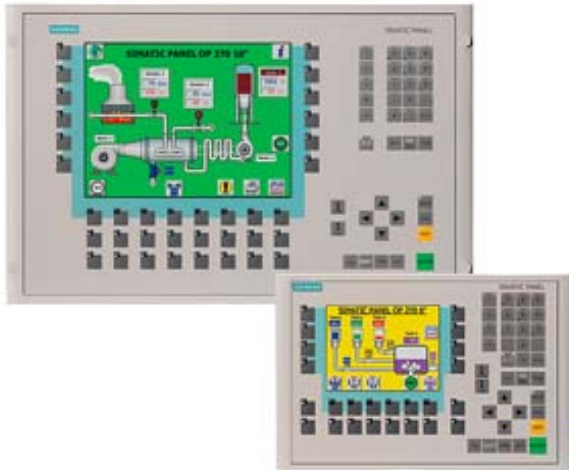


\*\*\*Spare part\*\*\* SIMATIC OP 270 6" Operator panel 5.7" STN color display 2 MB configuration memory, configurable with ProTool From Version V6.0



Display	
Design of display	STN, 256 colors
Screen diagonal	5.7 in
Resolution (pixels)	
• Horizontal image resolution	320 Pixel
• Vertical image resolution	240 Pixel
Backlighting	
• MTBF backlighting (at 25 °C)	40 000 h
Control elements	
Control elements	Membrane keyboard
Keyboard fonts	
• Membrane keyboard	Yes
— user-definable label membrane keys	Yes
• Function keys	
— Number of function keys	24
— Number of function keys with LEDs	18
• System keys	
— Number of system keys	36

• Numeric keyboard	Yes
• alphanumeric keyboard	Yes
• hexadecimal keyboard	Yes
• Multi-key operation	Yes
<b>Touch operation</b>	
• Design as touch screen	No
<b>Connection type</b>	
• Type of connection for mouse/keyboard/barcode reader	USB / USB / USB
<b>Special operator controls</b>	
• Handwheel	No
<b>Installation type/mounting</b>	
Mounting position	vertical
maximum permissible angle of inclination without external ventilation	35°
<b>Supply voltage</b>	
UPS connectable (serial)	Yes
<b>Input current</b>	
Current consumption (rated value)	0.6 A
<b>Processor</b>	
Processor type	RISC 32-bit
<b>Drives</b>	
Diskette drive	No
CD-ROM	No
Hard disk	No
<b>Memory</b>	
Type of memory	Flash / RAM
Memory available for user data	2 048 kbyte
<b>Battery</b>	
<b>Backup battery</b>	
• Backup battery (optional)	Yes; optional 3.6 V
• Backup time, min.	3 y
<b>Type of output</b>	
Info LED	Yes
Power LED	No
Error LED	No
<b>Time of day</b>	
<b>Clock</b>	
• Type	Hardware clock, battery backup, synchronizable

- retentive
- synchronizable

Yes

Yes

## Interfaces

Interfaces/bus type	2 x RS232, 1 x RS422, 1 x RS485 (max. 12 Mbit/s)
Number of RS 485 interfaces	1
<ul style="list-style-type: none"> <li>• Transmission rate, max.</li> </ul>	12 Mbit/s
USB port	Yes; 1 x USB
PC card slot	No
CF card slot	1 x CF card slot
<b>Industrial Ethernet</b>	
<ul style="list-style-type: none"> <li>• Industrial Ethernet interface</li> </ul>	No

## Degree and class of protection

IP (at the front)	IP65
IP (rear)	IP20

## Standards, approvals, certificates

Certifications	CE, GL, ABS, DNV, LRS, FM Class I Div. 2, UL, cULus, EX Zone 2/22, C-TICK
----------------	---

## Ambient conditions

<b>Ambient temperature during storage/transportation</b>	
<ul style="list-style-type: none"> <li>• min.</li> </ul>	-20 °C
<ul style="list-style-type: none"> <li>• max.</li> </ul>	60 °C
<b>Relative humidity</b>	
<ul style="list-style-type: none"> <li>• Operation, max.</li> </ul>	90 %

## Operating systems

pre-installed operating system	Windows CE
--------------------------------	------------

## Configuration

<b>Configuration software</b>	
<ul style="list-style-type: none"> <li>• Configuration tool</li> </ul>	ProTool Version 6 SP 3 or higher, or WinCC flexible Standard Version 2004 or higher (to be ordered separately)

## Languages

<b>Online languages</b>	
<ul style="list-style-type: none"> <li>• Number of online/runtime languages</li> </ul>	5
<b>Project languages</b>	
<ul style="list-style-type: none"> <li>• Languages per project</li> </ul>	32

## Functionality under WinCC (TIA Portal)

Libraries	Yes
Number of Visual Basic Scripts	
<ul style="list-style-type: none"> <li>• Debugging in the simulator</li> </ul>	No
Task planner	Yes
Help system	Yes

• Number of characters per info text	70
• Number of tooltips	0
<b>Message system</b>	
• Number of alarm classes	32
• Number of messages	4 000
• Bit messages	Yes
— Number of bit messages	2 000
• Analog messages	Yes
— Number of analog messages	2 000
• Telegram message procedure Alarm S	Yes
• System messages HMI	Yes
• System messages PLC	No
• System messages, other (SIMATIC S7, Sinumerik, Simotion, etc.)	No
• Lines	1
• Number of characters per message	70
• Number of process values per message	8
• Acknowledgment groups	Yes
• Message indicator	Yes
• acoustic feedback	No
• First/last value	Yes
<b>Recipe management</b>	
• Number of recipes	300
• Data records per recipe	500
• Entries per data record	1 000
• Recipe memory	64 KB integrated Flash, expandable
<b>Variables</b>	
• Number of variables per device	2 048
• Number of variables per screen	200
• Number of variables	2 048
• Type Date & Time	2 048
• Limit values	Yes
• Multiplexing	Yes
• Structures	Yes
<b>Images</b>	
• Number of configurable images	300
• Permanent window/default	Yes
• Start screen configurable	Yes
• Image selection by PLC	Yes
• Image number in the PLC	Yes
<b>Image objects</b>	

• Text objects	10,000 text elements
• Number of I/O fields per image	200
• Number of date/time fields	30
• Index of screen context	No
• Return	Yes
• Graphics object	Bit maps, icons, vector graphics
— Icons	1 000
— Icon (full screen)	0
<b>Complex image objects</b>	
• Status/control	With SIMATIC S7
• dynamic objects	Diagrams, bar graphs, invisible buttons
— Number of objects per project	500
— Number of curve diagrams per image	5
• Methods	Trend
• Bar graphs	
— Number of bars per chart	10
• Sliders	
— Number of slides per image	0
• Pointer instruments	
— Number of analog indicators per image	0
• Limit value lines	Yes
• Number of alphanumerical fields	1 000
— alphanumeric fields per image	100
• Number of numerical fields	1 000
— numerical fields per image	100
• Number of password fields	1 000
• Number of visible switches per project	1 000
— visible switches per image	100
— hidden switches per image	100
• Number of status switches per project	1 000
— Number of status switches per image	100
• Number of selector switches per project	1 000
— Selector switches per image	100
• Number of decade switches per project	0
— Decade switches per image	0
• Number of signal lamps per project	1 000
— Signal lamps per image	100
<b>Attributes for dynamic objects</b>	
• Color change	Yes
• X/Y movement	Yes
• Hide	Yes

• Angle of rotation	No
<b>Lists</b>	
• Number of text lists per project	500
• Number of entries per text list	256
• Number of graphics lists per project	400
• Number of graphic lists per image	10
• Number of entries per graphics list	255
<b>Archiving</b>	
• Number of archives per device	20
• Number of measuring points per project	20
• Number of entries per archive	10 000
• Message archive	Yes
• Process value archive	Yes
• Archiving methods	Sequence archive, circular log, alarm log, process value archive
— Sequential archive	Yes
— Short-term archive	Yes
• Memory location	CF card, Ethernet
— PC card	No
— CF card	Yes
— USB memory	No
— Ethernet	Yes
• Data storage format	CSV file, readable, e.g. with MS Excel, MS Access
— CSV	Yes
— TXT	No
• external evaluation	Readable, e.g. with MS Excel, MS Access, etc.
• Size of archive	depending on free memory on ext. card/stick or on free hard disk space via network drive
• Online evaluation	via trends
— using trend curves	Yes
<b>Filters</b>	
• cyclic	Yes
• Tolerance	Yes
• Change	Yes
<b>Security</b>	
• Number of user groups	50
• Number of user rights	32
• Password export/import	Yes
<b>Logging through printer</b>	
• Recording/Printing	Alarms, report (shift report), color print, hardcopy
<b>Transfer (upload/download)</b>	
• Transfer of configuration	MPI/PROFIBUS DP, serial, USB, Ethernet, automatic transfer recognition

## Process coupling

- |                              |   |
|------------------------------|---|
| • Connection to controller   | S5, S7-200, S7- 300/400, TI 505, Win AC, PC (TCP/IP), SINUMERIK, SIMOTION, Allen Bradley (DF1), Allen Bradley (DF485), Mitsubishi (FX), Telemecanique (ADJUST), OMRON (LINK/Multilink), Modicon (Modbus), for further non-Siemens drivers, see section on "System interfaces" |
| • S7-200                     | Yes   |
| — PPI (point-to-point)       | Yes   |
| — PPI network                | No  |
| — MPI                        | Yes   |
| — PROFIBUS DP                | Yes   |
| • S7-300/400                 | Yes   |
| — MPI                        | Yes   |
| — PROFIBUS DP                | Yes   |
| — PROFINET                   | No  |
| • S5                         | Yes   |
| — serial                     | Yes   |
| — PROFIBUS DP                | Yes   |
| • TI 505                     | Yes   |
| • Allen Bradley (DF1)        | Yes   |
| • Allen Bradley (DF485)      | Yes   |
| • Mitsubishi (FX)            | Yes   |
| • Mitsubishi (MP4)           | Yes   |
| • Telemecanique (ADJUST)     | Yes   |
| • Telemecanique (Uni-Telway) | Yes   |
| • OMRON (LINK/Multilink)     | Yes   |
| • Modicon (Modbus)           | Yes   |
| • GE-Fanuc (SNP)             | Yes   |

## Functions

- |                         |     |
|-------------------------|-----|
| • Key repeat            | No  |
| • TAB sequence          | Yes |
| • Calculating functions | Yes |
| • Animate               | Yes |
| • Menu tree editor      | No  |
| • Unit switchover       | No  |

## Service tools/configuration aids

- |                           |     |
|---------------------------|-----|
| • Clean screen            | No  |
| • Touch calibration       | No  |
| • Backup/Restore manually | Yes |
| • Simulation              | Yes |
| • Device switchover       | Yes |
| • Delta transfer          | Yes |

- Monitoring function for battery and memory
- Trace (operation archive)

Yes  
No

#### Expandability/openness

- Open Platform Program

Yes

#### Peripherals/Options

Peripherals

Printer, barcode reader

#### Dimensions

Width of the housing front

308 mm

Height of housing front

204 mm

Overall depth

59 mm

#### Weights

Weight (without packaging)

1 kg

#### Other

free hotline

Yes

Warranty period

1 y

**last modified:**

02/27/2018 